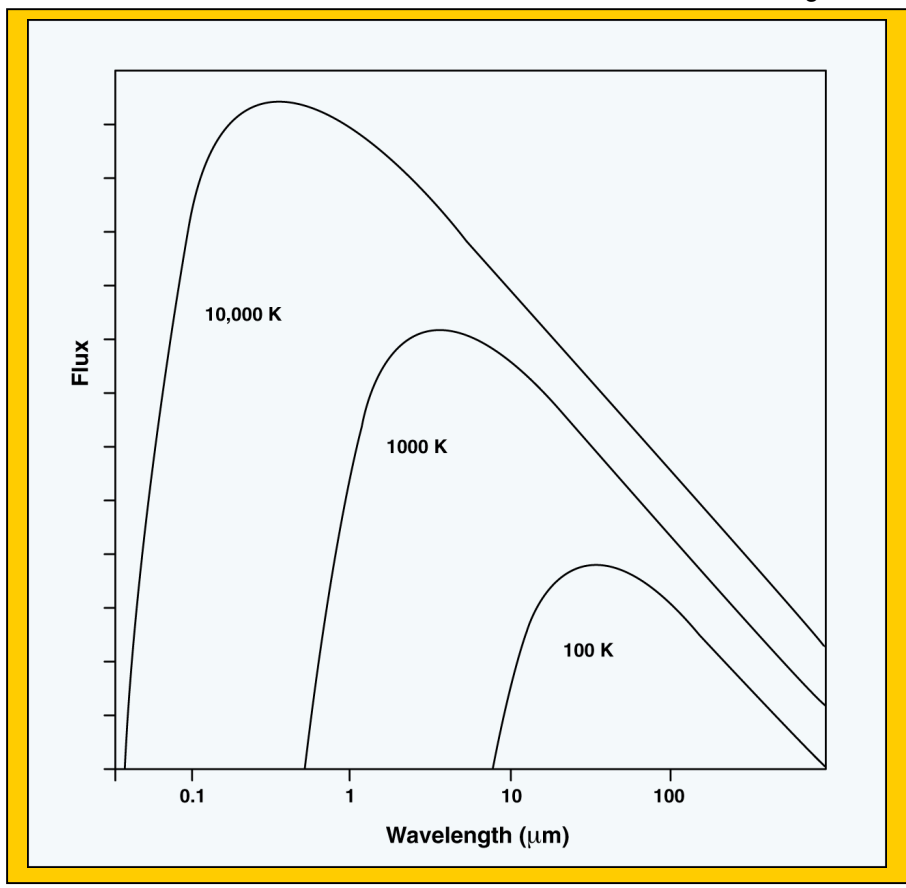


Cosmic Chemistry: Planetary Diversity

Here Comes the Heat

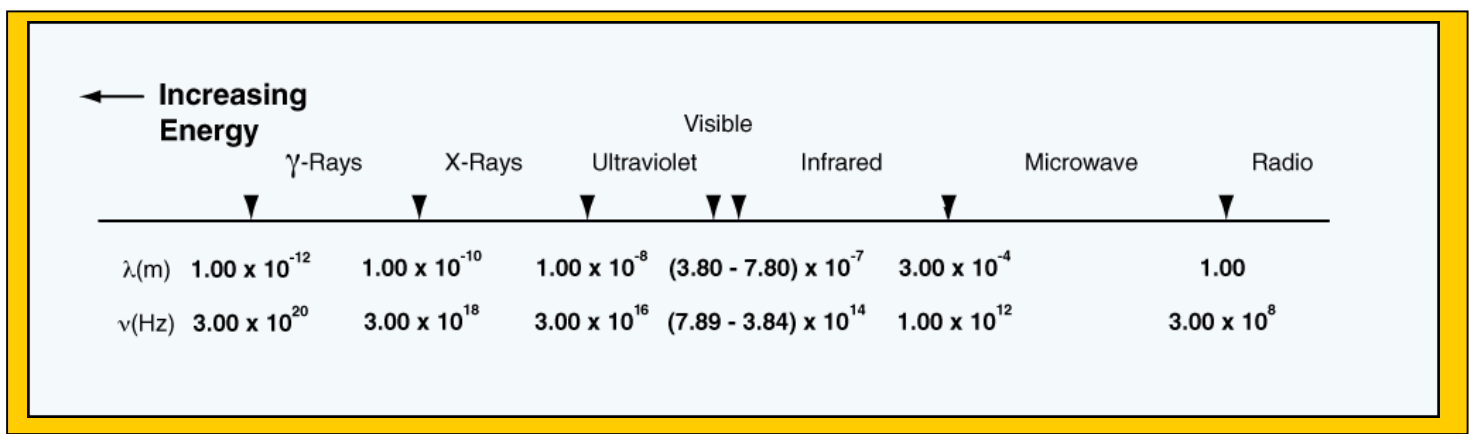
STUDENT HANDOUT

Figure 1*



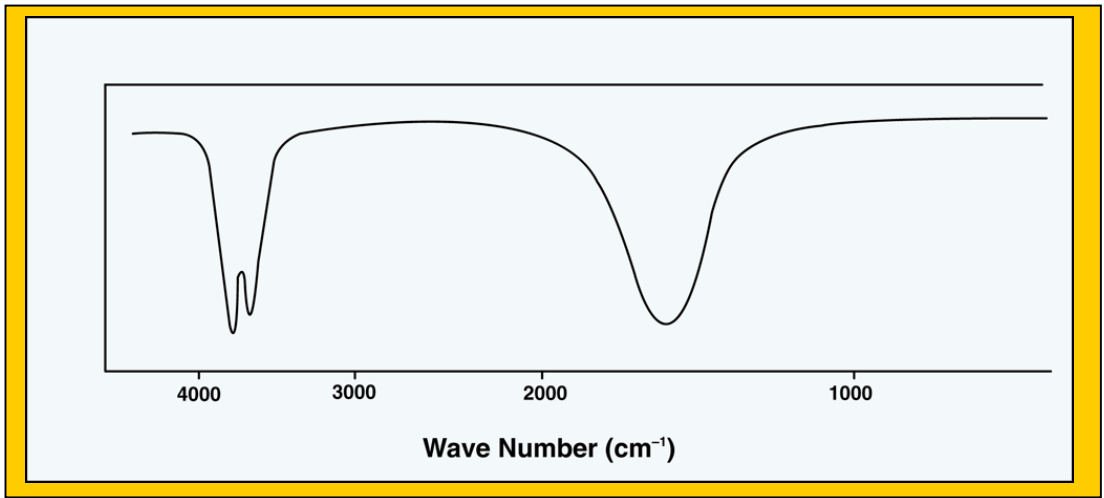
These graphs are called Planck function or **blackbody** curves.

Figure 2



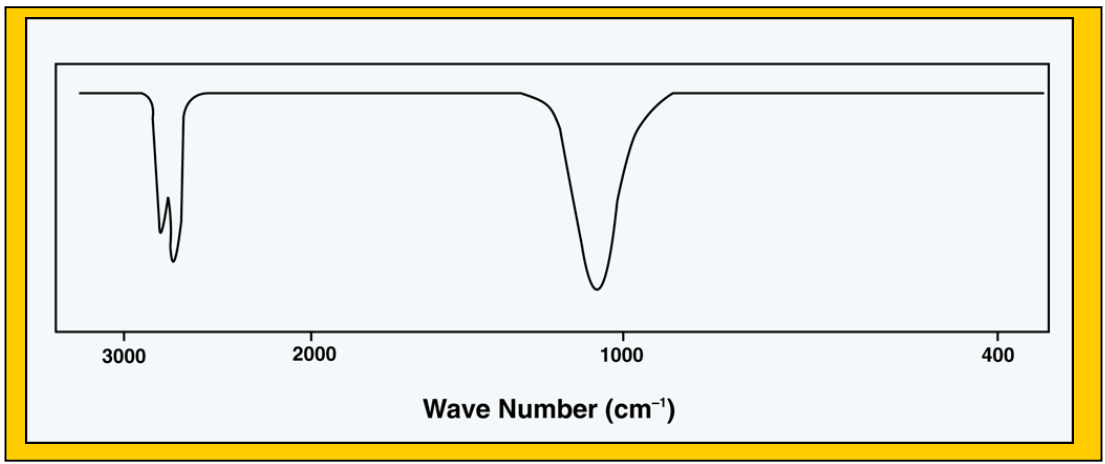
Electromagnetic Spectrum

Figure 3a



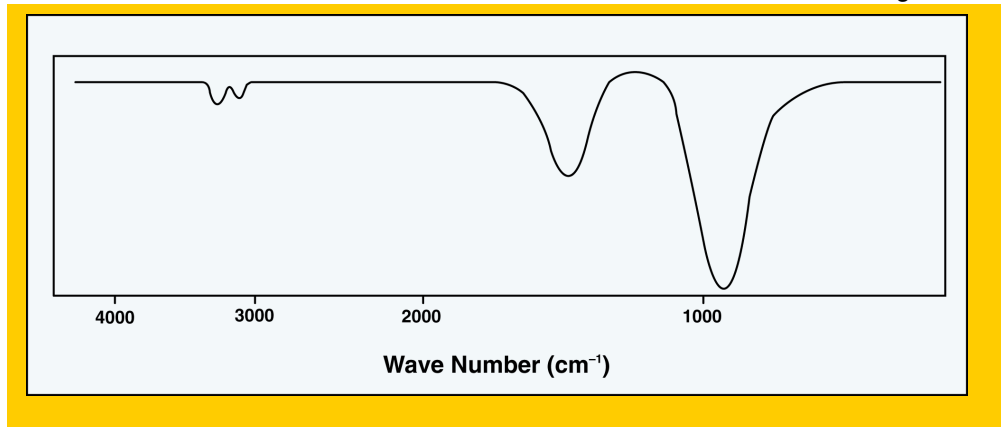
Gaseous water spectrum.

Figure 3b



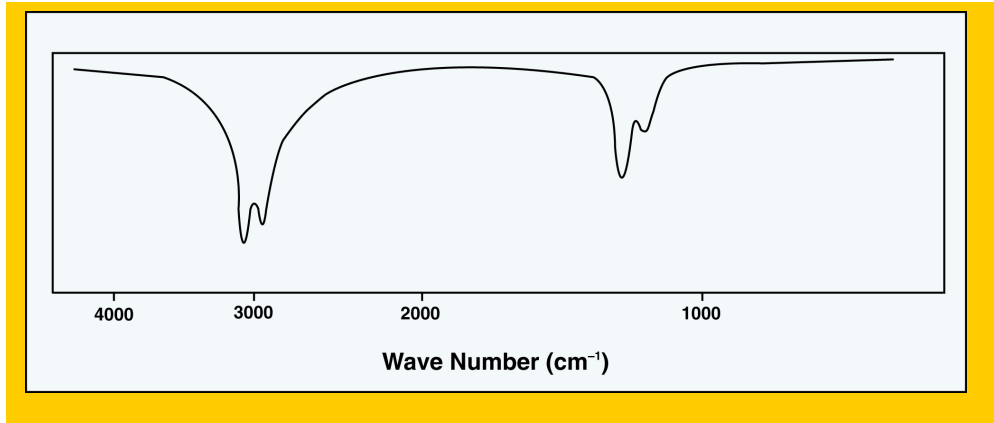
Deuterium oxide spectrum.

Figure 4a



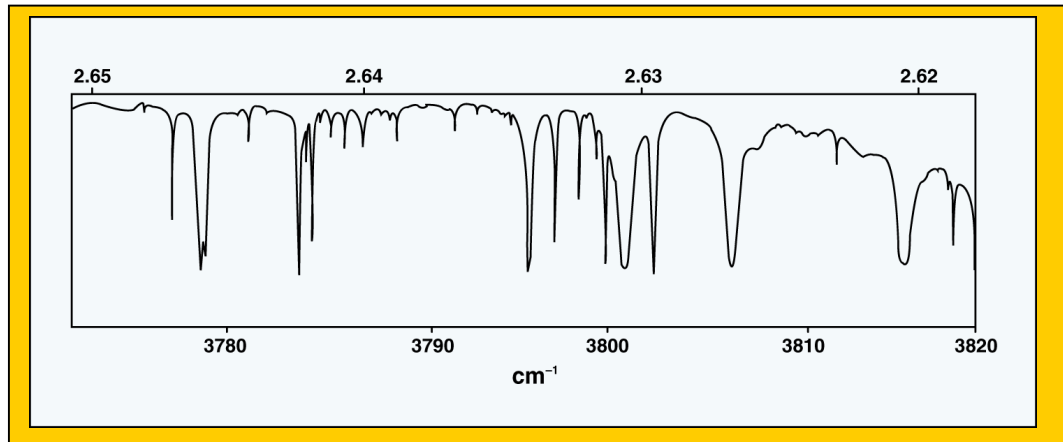
Ammonia spectrum.

Figure 4b



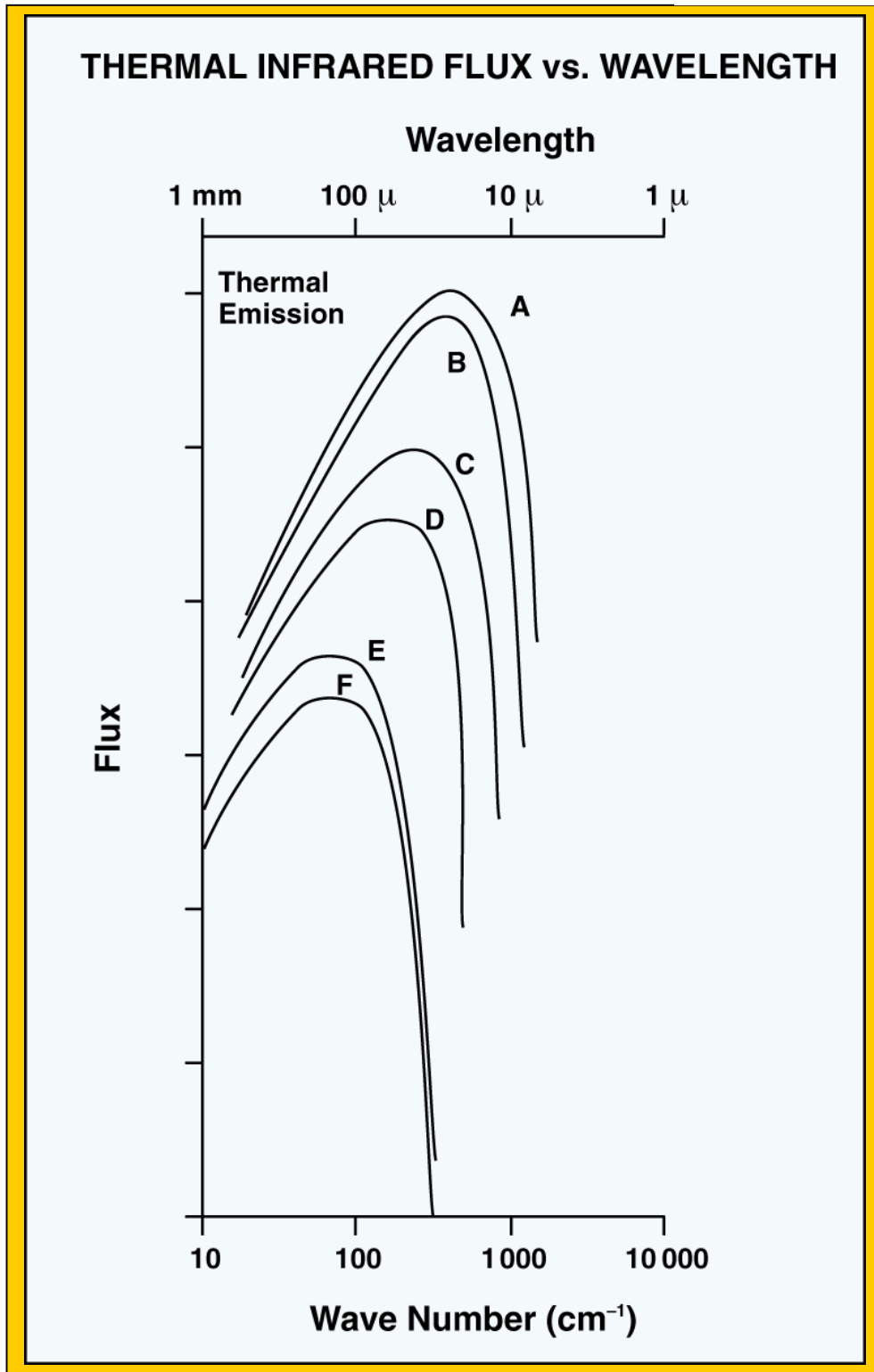
Methane infrared spectrum.

Figure 5



Partial spectrum of planetary atmosphere

Figure 6



Note. Emission lines A through F indicate radiation from planets A through F.

*All images are courtesy of McREL.